

WE ARE HAPPY ABOUT HAVING YOU HERE

to discuss the various aspects of sustainable lighting with us in an open, appreciative, tolerant and respectful atmosphere.

And in doing so, **to bring** the topics of **avoiding light pollution** and **circularity in the lighting industry out of the professional world and into the wider society** and make them better known.

We want to play an active role in

- ensuring that light pollution does not continue to increase by 10% per year
- that the harmful effects of lighting production are reduced.

WHEN: 05.11.2024, 09:00 - 19:00 - 19:30,

WHERE: Marshall House

Training certificate AK Berlin, LiTG;
Please note the attached hygiene concept if applicable

Today we are all experts AND amateurs, which is why we welcome everyone who actively participates in the entire program.

For reasons of room acoustics, the OG will be closed during the lectures and discussions. We also ask you to avoid personal meetings during this time.

YOUR PARTICIPATION



Please register for free for the PLANNERS DIALOGUE, there is a separate position under Eventbrite:

<https://www.eventbrite.de/e/zukunftsfahig-beleuchten-symposium-tickets-957020984527>

Every visitor to the symposium requires a free separate **belektro ticket**.

www.belektro.de/tickets

https://gather-around-light.net/wp-content/uploads/2024/09/belektro2024_Anleitung-zum-Einloesen-eines-kostenfreien-Voucher-Codes.pdf

PLEASE BRING YOUR OWN NAME TAG FOR MORE SUSTAINABILITY



DURING THE EVENT WE WILL BE FILMING AND TAKING PICTURES FOR OUR OWN PROMOTIONAL REASONS. WITH ACCESS OF THE EVENT, YOU AGREE TO THIS PURPOSE

Sustainable event:

We recommend that our visitors travel by bus and train instead of by car or plane, as well as booking SUSTAINABLE ACCOMMODATION:

<https://www.belektro.de/de/besuchen/anreise-aufenthalt/>

We ask our partners and sponsors to refrain from giveaways and offer regional and seasonal catering

SDG's & NACHHALTIGKEITSZIELE:

<https://gather-around-light.net/past-and-present/zube2024/#sdg>

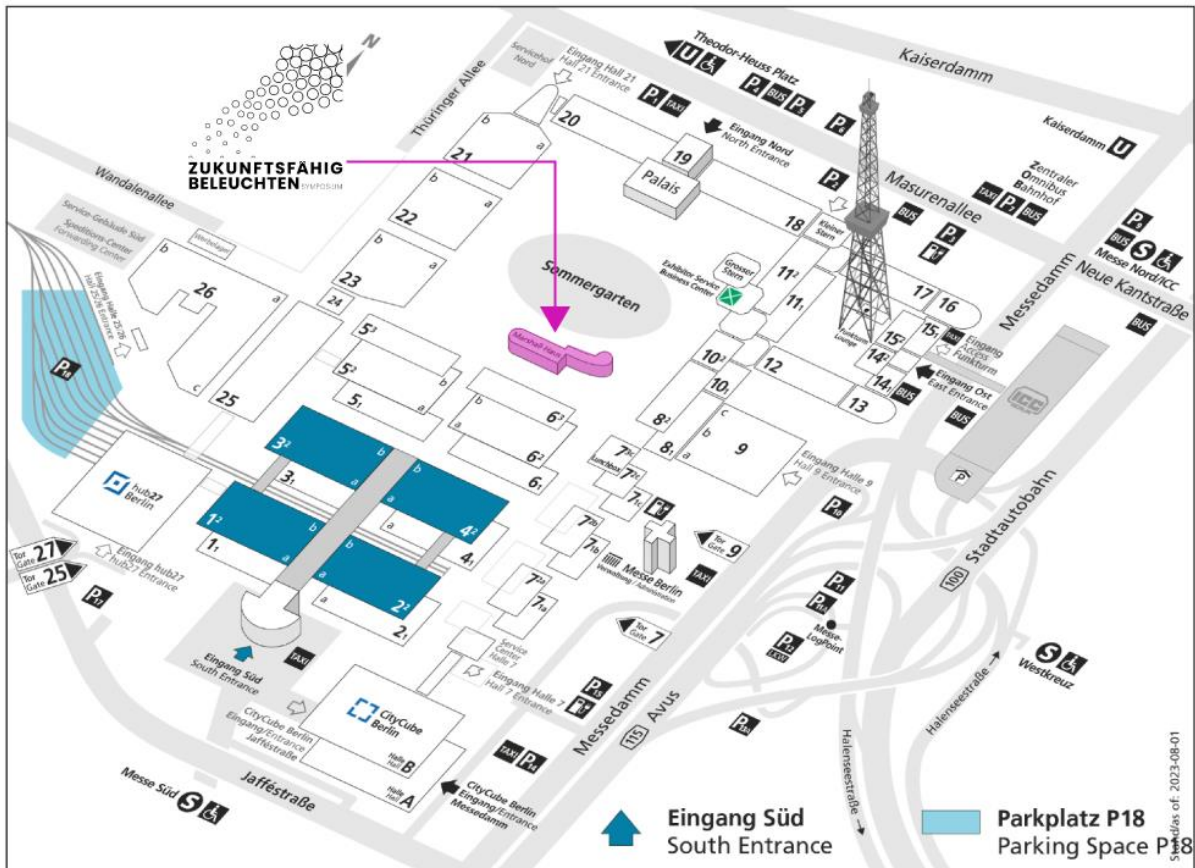
https://gather-around-light.net/wp-content/uploads/2024/11/2024_ZuBe_Sustainable-Event.pdf

DIE LOCATION

Marshall-Haus im Sommergarten
 Messedamm 22 Westend
 14055 Berlin
 Eingang Messe Süd
 über Jafféstraße, 14055 Berlin
 belektro: Hallen 1.2, 2.2, 3.2, 4.2

ÖPNV: Messe Süd, S-Bahnlinien S9 oder S3,
 Haltestelle Messe Süd

Limited paid parking spaces are available in the P18 parking lot. Please use public transportation



IN URGENT CASES - CONTACT

Who	Name	Mail	Phone
LiTG / GAL Orga / Symposium	Caroline Vilbrandt	caroline.vilbrandt@litg.de	+49 179 545 2119
LiTG	Cornelia Vandahl		+49 170333266

Lighting affects all areas of life - environment / culture / health, is of social interest and a very public issue, which should therefore be debated more publicly.

We would Therefore like to invite you to the

Symposium FUTURE PROOF LIGHTING 2024

is a forum, a training course and provides inspiration for all those who work with light.

Focus on environmental compatibility and sustainability

Expert knowledge and inspiration

Participants can expect a successful mix of inspiring impulses from specialists with expertise in lighting research and standardization, nature conservation, production and application, ecology, daylight and artificial lighting design and sustainable luminaire construction.

Interactive discussions

This includes lively round-table discussions in which best practice examples and innovative approaches are exchanged. Gallery presentations will showcase exemplary approaches and lighthouse projects.

Objective: To raise awareness

The aim of this event is to raise awareness of the impact of lighting on the environment (biodiversity) and society. This knowledge is intended to be established beyond the professional world in the general public in order to make both professional and private lighting more sustainable.

WHEN: November 5 2024, 09:00 - 19:30

WHERE:

Messe Berlin, Marshall-Haus, Messedamm 22, 4055 Berlin, Germany
aside the zur belekto

TARGET GROUP: Politicians / municipalities / building & environmental authorities / real estate industry & housing associations, associations from architecture & planning to guilds

Registration / Tickets

between 95 and 195€, Association and early bird discounts:

<https://www.eventbrite.de/e/zukunftsfahig-beleuchten-symposium-tickets-957020984527>

An event organized by LiTG on the initiative of Gather Around Light, with the kind support of belektro and many others.

About the LiTG

The LiTG, German Society for Lighting Technique and Lighting Design e.V., based in Berlin, is a registered independent non-profit association with over 100 years of history and around 2000 members. The LiTG sees itself as a dynamic network and knowledge platform for all those interested in light and deals with "light and lighting" in the areas of technology, design, planning and application in theory, practice and research.

It organizes events and conferences, produces specialist publications and maintains the "European Lighting Expert" training and examination program.

It also participates in the development of national and international standards and cooperates with relevant specialist organizations such as DIN, CEN, CIE, ISO and the national lighting societies.

Further Information: www.litg.de

About Gather Around Light:

an informal network of light and darkness enthusiasts from lighting planning, design, science, art, luminaire manufacture & sales.

Organizer of the bi-monthly Berlin lighting get-together and interface of LiTG, IALD, WIL, OpTec BB & more.

Initiators of events on the topic with a view beyond the horizon to the most diverse perspectives and communication to the public.

Civic-professional voluntary commitment with passion & impact.

Further information at www.gather-around-light-net

Sustainable event:

We recommend that our visitors travel by bus and train instead of by car or plane, as well as booking sustainable accommodation.

We ask our partners and sponsors to refrain from giveaways and offer regional and seasonal catering.

More Information

www.zukunftsfaehig-beleuchten.de -

SDG's & SUSTAINABILITY GOALS:

<https://gather-around-light.net/past-and-present/zube2024/#sdg>

PROGRAM & SCHEDULE NOVEMBER 5:

09:00 a.m. Admission & cup of coffee

09:30 a.m. Speeches & intro - Presentation of the Experts and the Speakers

10:00 a.m. 4x10+5 minutes Impulses, Positions, Questions

11:20 a.m. Coffee break

11:50 a.m. 3x10+5 minutes Impulses, Positions, Questions

12:50 a.m. Lunch, guided exhibition & trade fair tours; networking

2:00 p.m. Panel discussion, possibly with coffee break

4:30 p.m. Time for refreshments, guided exhibition & trade fair tours; networking

5:30 p.m. Light Slam

6:00 p.m. Summary & outlook

6:30 p.m. Time to wind down, guided tours of the exhibition; networking

7:30 p.m. End

MODERATION

Simon Hauser - Moderator, commissioned speaker, coach

<http://www.hauser-kommunikation.de>

IMPULSEs - EXPERTES & TOPIC*:

- 10:00**  **Sustainable employment relationships** - competent, fair, autonomous, at eye level
Solveig Buseler - Schnick Schnack Systems, Global Director Sales & Marketing
Member of the Board 
- 10:20**  **A brief scientific look** at the environmental impact of luminaires
Dr. Sebastian Knoche -
Manager Research TRILUX GmbH & Co. KG, 
- 10:40**  **Aluminum in comparison** - what influence does the raw material have on the overall result of the ecological footprint of luminaires
Dipl. Ing. Joachim Becker - Founder and Managing Director of beolum GmbH
Lecturer & Consulting Sustainability 
- 11:00**  Circular Economy – from Green Deal into practice
CSR, ESPR & Digital Product Passport
How is a company preparing to shape the transformation from a linear to a circular economy?
What are the requirements and interfaces with the construction industry?
Dipl. Des. Ines Göbel - Sustainability Manager Zumtobel Group; before Uni Kassel, Braungart EPEA / C2C, Lecturer Circular Economy 
- 11:20** **Break**
- 11:40**  **Light in transition** -
Requirements for recyclable and sustainable lighting
Christian Brehm - Senior Director
Lightcycle Retourlogistik & Service GmbH, München 
- 12:00**  **Lighting of railroad installations** in accordance with DIN EN 12464-2, taking into account the requirements according to DB guideline 81305 with regard to environmental compatibility
Hon.-Prof. Dipl.-Ing. Axel Stockmar
Hannover University of Applied Sciences and Arts
LCI Light Consult International 
- 12:20**  **Synergy effects** for Advertising & commercial lighting, general and outdoor lighting thanks to lighting control via the IOT
Johannes Mailänder
Gründer & CMO LichtWART GmbH;
vorm. Prokurist & Verkaufsleiter Bertelmann GmbH 

MARKET OF POSSIBILITIES - Partners and sponsors

Positions & approaches to sustainability: strategies & examples, lighthouse projects & best practice from all areas of life with lighting - production, application, planning, research, vacation, leisure, play, fun & lifestyle

EXHIBITION ON PRUDENT OUTDOOR LIGHTING & IN THE MOVIE THEATER

Adolf Schuch GmbH:

Outdoor lights for star parks

Annette Krop Benesch: Journey through the bright night - a game about light pollution

Bergmeister GmbH: Regional outdoor lighting manufacturer with circular potential

BFN - Federal Agency for Nature Conservation:

Publications, guidelines, recommendations

Catherine Perez Vega: The environmental impact of artificial lighting in urban settings: gaps, challenges and sustainable lighting design

Focus Lighting GmbH:

Seawater resistance through oxidation; take-back concept for luminaires in the circuit

Förderverein Nationalpark Boddenlandschaft e.V. & Büro für Landschaftsplanung und Umweltberatung: Best practice - Ahrenshoop - more insect-friendly outdoor lighting

more insect-friendly outdoor lighting

HEI Technology International GmbH:

Solar luminaires for public street lighting DACH

L&L Luce&Light:

Shielded outdoor lights & light accents

Laternix GmbH & Co. KG: Continued use through retrofitting instead of replacing existing luminaires

Leibniz Institute of Freshwater Ecology and Inland Fisheries: AUBE-Project

LichtWART GmbH: Save costs & protect biodiversity with smart lighting control for retail, industry, commerce and marketing

ROLAN Manifesto in german language

Selux GmbH: AETO Solar System Pole & Circulare Light profiles

Siteco GmbH:

Smart outdoor lighting & control

Sky Heia GmbH:

Sleeping under the stars

Ulrike Brandi Licht Lichtplanung und Leuchtenentwicklung GmbH: presentation of the „EU

Interreg Northsea Project Darker Sky“

VISIT DARK SKIES® GmbH:

Audio experience for stargazers

WE-EF LEUCHTEN GmbH:

sensitive Lighting



GALLERY EXHIBITIONS

Anolis Lighting Division Robe Deutschland GmbH:

Lighting solutions for architectural lighting from sustainable production with minimized scattered light

Beolum GmbH - Alternative raw materials to aluminum

Brandt & Partners: Optimizing management and processes - industry-specific HR consulting and data-based efficiency diagnostics

Ellux Vertriebs GmbH: A strong partner for sophisticated and sustainable lighting solutions - examples from various manufacturers

Fagerhults Belysning AB: Introducing a pioneer in sustainability and recyclability

IGuzzini illuminazione Deutschland GmbH: Ways to Design For Recycling and examples of the use of regrowing raw materials in lighting.

IALD German Chapter

Ledvance GmbH - Everloop, Natureloop & VIVARES Lichtmanagementsystem

Lightcycle Retourlogistik und Service GmbH: How can lighting be recycled?

LightLife Gesellschaft für audiovisuelle Erlebnisse mbH: Griven - Architectural lighting for intact nightscapes

LiTG / LTG e.V. Nachhaltigkeits-AG: Position paper on sustainable lighting

Lumen Radio: Light - even without cables

Regiolux GmbH: Pioneering innovations with efficient and environmentally friendly luminaires

Schnick-Schnack-Systems GmbH: High-quality individual, ready-to-use lighting solutions and controls for special tasks from sustainable production

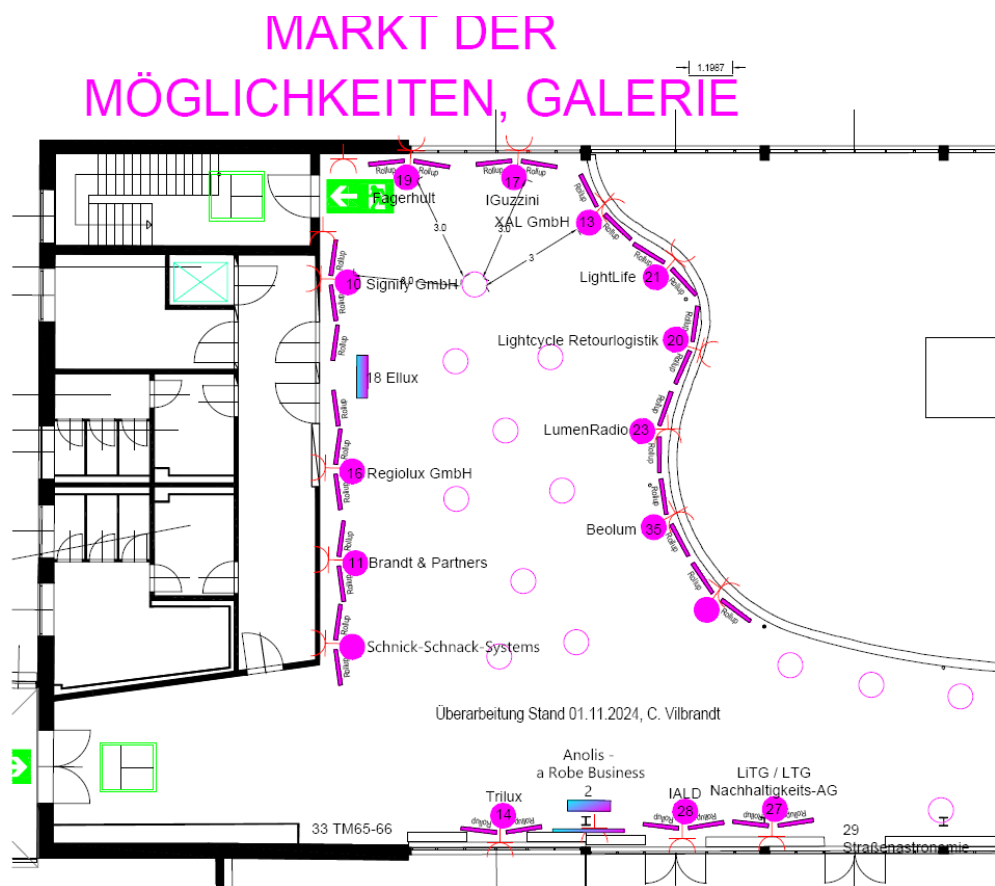
Signify GmbH: 3D printed lights - sustainable, individual and suitable for every style

Street Astronomy: bringing Stars to Citizens

TM65-66: Sustainable luminaire production in the UK

Trilux GmbH: Research project SUMATRA, Wellumic - The symbiosis of daylight and artificial light

XAL GmbH: Future-proof through sustainable product concepts



Supplementary on 6.11.24

PARTNER PRESENTATIONS "FUTURE-PROOF LIGHTING AT BELEKTRO FROM THE PERSPECTIVE OF RESEARCH AND INDUSTRY"*

WHEN: from 14:30

WHERE : Forum Energy + Technology, Hall 3.2, Stand 42

Topics Approaches to sustainable and recyclable luminaire production, nature & environmental protection, legislation and law

14:30



Environmentally friendly lighting or what needs to be considered when planning lighting - Suggestions from the perspective of the Federal Agency for Nature Conservation

Marita Böttcher, BfN, FG II 4.2, Leipzig

Since 1993 Initiating and participating in various research projects, collaborations, legislative projects and publications on the reconnection of spaces and light pollution



14:50



Rethinking the circular economy: smart, environmentally friendly lighting solutions for existing systems

Dipl. Wirtsch. Ing. Michael Haertl,

Founder and Managing Director Laternix GmbH & Co. KG, formerly CTO Siteco - Development of sustainable LED solutions for the energy-efficient modernization of indoor and outdoor lighting



15:05



Rethinking light and energy

Dipl. Ing. Roman Liebe, Dipl. Ing. Photoingenieur, M.A. Lighting Design - Senior Creative Engineer Selux GmbH, before Development of lighting systems and lighting solutions; development engineer in the semiconductor industry



15:30



Street lighting yesterday / today / tomorrow - Ideas / Concepts / Solutions

M. Sc. Samuel Fiedelak - Sales representative City Siteco GmbH

Before. Research activity TU Berlin, AG Outdoor Lighting, i.a.

LED catwalk, member of outdoor lighting expert forum LITG



15:45



Small series from the printer - a sustainable production alternative

Dipl. Ing. Sabrina Bräuß

Signify GmbH, Sales & Business Development Manager 3D Printing



16:00



More sustainability in outdoor lighting with

solar lights outdoor lighting in the DACH region

Dieter Hornbachner

Founder and Managing Director of HEI Technology International GmbH - Highly efficient LED outdoor lighting, solar street lighting.



16:15



Sustainable lighting - through legal regulations to innovation

Dr. Sibylle Schroer, Scientific Coordinator for Sustainability and Biodiversity Research at the Leibniz-Institute of Freshwater Ecology and Inland Fisheries (IGB) in Berlin.



16:35



Designing light responsibly

Elisa Balboni L&L Luce&Light

Key Account Light planners, architects



16:50

End

*Subject to changes and additions

MEDIA PARTNER

HighLight
OnLight

SUPPORTED BY:

Kongressfond Berlin
Heidehof-Stiftung
German Architects

Dark Sky Association
IALD International Association of
Lighting Designers
HAW Hamburg
Hochschule Hamm-Lippstadt
Leibniz Institut für Gewässerökologie
TU Berlin
TU Darmstadt
TU Ilmenau

WOULD YOU LIKE TO SUPPORT THE INITIATIVE FINANCIALLY?

<https://betterplace.org/p139428>

An event organized by LiTG on the initiative of Gather Around Light, with the kind support of belektro and many others.

About the LiTG

The LiTG, German Society for Lighting Technique and Lighting Design e.V., based in Berlin, is a registered independent non-profit association with over 100 years of history and around 2000 members. The LiTG sees itself as a dynamic network and knowledge platform for all those interested in light and deals with "light and lighting" in the areas of technology, design, planning and application in theory, practice and research.

It organizes events and conferences, produces specialist publications and maintains the "European Lighting Expert" training and examination program.

It also participates in the development of national and international standards and cooperates with relevant specialist organizations such as DIN, CEN, CIE, ISO and the national lighting societies.

Further Information: www.litg.de

About Gather Around Light:

an informal network of light and darkness enthusiasts from lighting planning, design, science, art, luminaire manufacture & sales.

Organizer of the bi-monthly Berlin lighting get-together and interface of LiTG, IALD, WIL, OpTec BB & more.

Initiators of events on the topic with a view beyond the horizon to the most diverse perspectives and communication to the public.

Civic-professional voluntary commitment with passion & impact.

Further information at www.gather-around-light-net

Notes on the hygiene concept for participants in the face-to-face event

Persons with symptoms of a respiratory illness with suspected SARS-CoV-2 infection must stay away from the event. If there is a suspicion of such an infection, which may be indicated in particular by fever, coughing and shortness of breath, the person concerned must leave the event immediately and seek medical treatment if necessary. .

If there is a corresponding official regulation at the time of the event, please note:

- When entering and within the Marshall House (except at your seat and at the tables), please wear a mouth and nose protector (MNS). To protect yourself and others, we recommend wearing a particle-filtering half-mask without an exhalation valve.
- A visitor list is available at the registration desk, where you can enter your contact details.
- Please keep a minimum distance of 1.5 meters from other people, even during break times.
- Breaks/lunch/dinner: Please observe the caterer's hygiene and organizational regulations.
- If possible, please bring your own FFP2 masks to the event. In case of emergency, a few masks will be available at the registration desk.
- Anyone who has received a positive result from a self-test should go into isolation as a precaution and reduce contacts and have a certified rapid antigen test carried out for verification.